

PRODUCT DATASHEET

L 8 W/640

Basic T5 Short | Tubular fluorescent lamps 16 mm, short, with G5 base



AREAS OF APPLICATION

- Shops
- Supermarkets and department stores
- Public buildings

PRODUCT BENEFITS

- Ideal for cost-effective creative illumination and decoration
- Very good luminous flux maintenance throughout the life of the lamp
- Slim and compact

PRODUCT FEATURES

- Average lifetime: up to 10,000 h (with QUICKTRONIC ECG)



TECHNICAL DATA

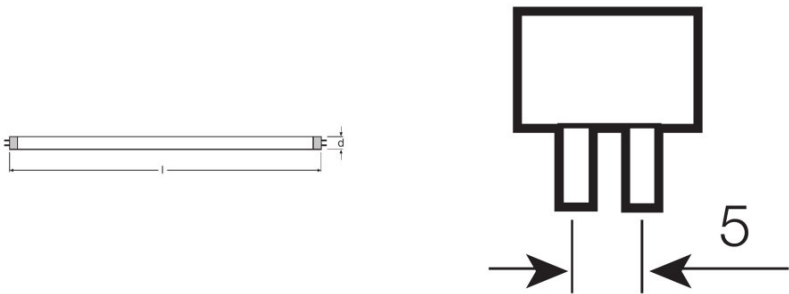
Electrical data

Rated lamp efficacy (HF data 25 °C)	Under clarification by authority and standardization body
Rated wattage	7.10 W
Nominal wattage	7.10 W

Photometrical data

Rated lamp efficacy (standard condition)	54 lm/W
Color rendering index Ra	≥60
Luminous flux at 25 °C	385 lm
Light color	640
Rated color temperature	4000 K
Light color (designation)	Cool White
Rated LLMF at 2,000 h	0.80
Rated LLMF at 4,000 h	0.74
Rated LLMF at 6,000 h	0.71
Rated LLMF at 8,000 h	0.69
Color temperature	4000 K
Luminous flux	385 lm
Color rendering index Ra	≥60

Dimensions & weight



Tube diameter	16 mm
Length	288.0 mm
Length with base excl. base pins/connection	288.00 mm
Diameter	16.0 mm
Maximum diameter	16.0 mm

Temperatures & operating conditions

Rated ambient temp.w.max.luminous flux	35.0 °C
--	---------

Lifespan

Rated lamp survival factor at 2,000 h	0.99
Rated lamp survival factor at 4,000 h	0.99
Rated lamp survival factor at 6,000 h	0.95
Rated lamp survival factor at 8,000 h	0.81
Operation mode LLMF/LSF	HF
Rated lamp life time	5000 h
Nominal lamp life time	5000 h

Additional product data

Base (standard designation)	G5
Mercury content	2.5 mg
Show WEEE picto	Yes

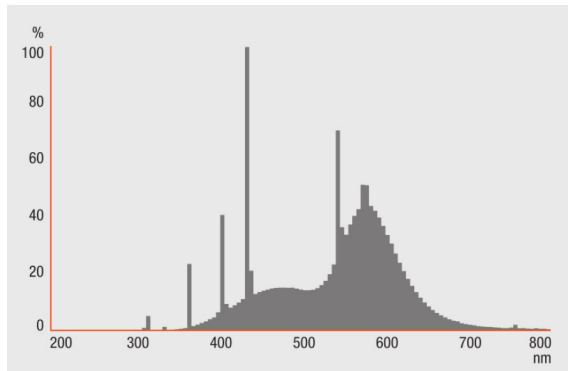
Capabilities

Suitable for indoor	Yes
---------------------	-----

Certificates & standards

Energy efficiency class	A
Energy consumption	9 kWh/1000h

Light Distribution

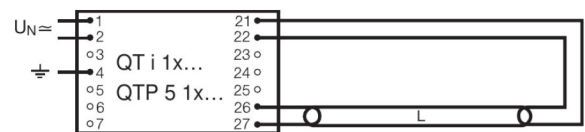


Spectral power distribution

Wiring Diagram

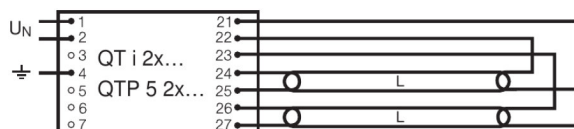


Die Zuleitungen 3 und 4 sollen so kurz wie möglich sein



Wiring diagram

Wiring diagram



Wiring diagram

SYSTEM GUARANTEE

OSRAM System+ Guarantee in combination with OSRAM ECGs

SAFETY ADVICE

In case of lamp breakage: www.ledvance.com/brokenlamp

LOGISTICAL DATA

Product code	Packaging unit (Pieces/Unit)	Dimensions (length x width x height)	Gross weight	Volume
4050300008912	Sleeves 1	303 mm x 19 mm x 23 mm	36.30 g	0.13 dm ³
4050300207124	Shipping carton box 25	320 mm x 119 mm x 105 mm	980.60 g	4.00 dm ³

The mentioned product code describes the smallest quantity unit which can be ordered. One shipping unit can contain one or more single products. When placing an order, for the quantity please enter single or multiples of a shipping unit.

DISCLAIMER

Subject to change without notice. Errors and omission excepted. Always make sure to use the most recent release.

Basic T5 Short | Tubular fluorescent lamps 16 mm, short, with G5 base

Product name	Product name ECG	EAN	Nominal current	Nominal wattage + Power loss	Luminous flux at 35 °C	Number of lighting outlets
L 8 W/640	QT-ECO 1x4-16/220-240 L		0.07 A	10.50 W	450 lm	1
	QT-ECO 1x4-16/220-240 S		0.07 A	10.50 W	450 lm	1
	QT-ECO 2x5-11/220-240 S		0.13 A	17.50 W	450 lm	2